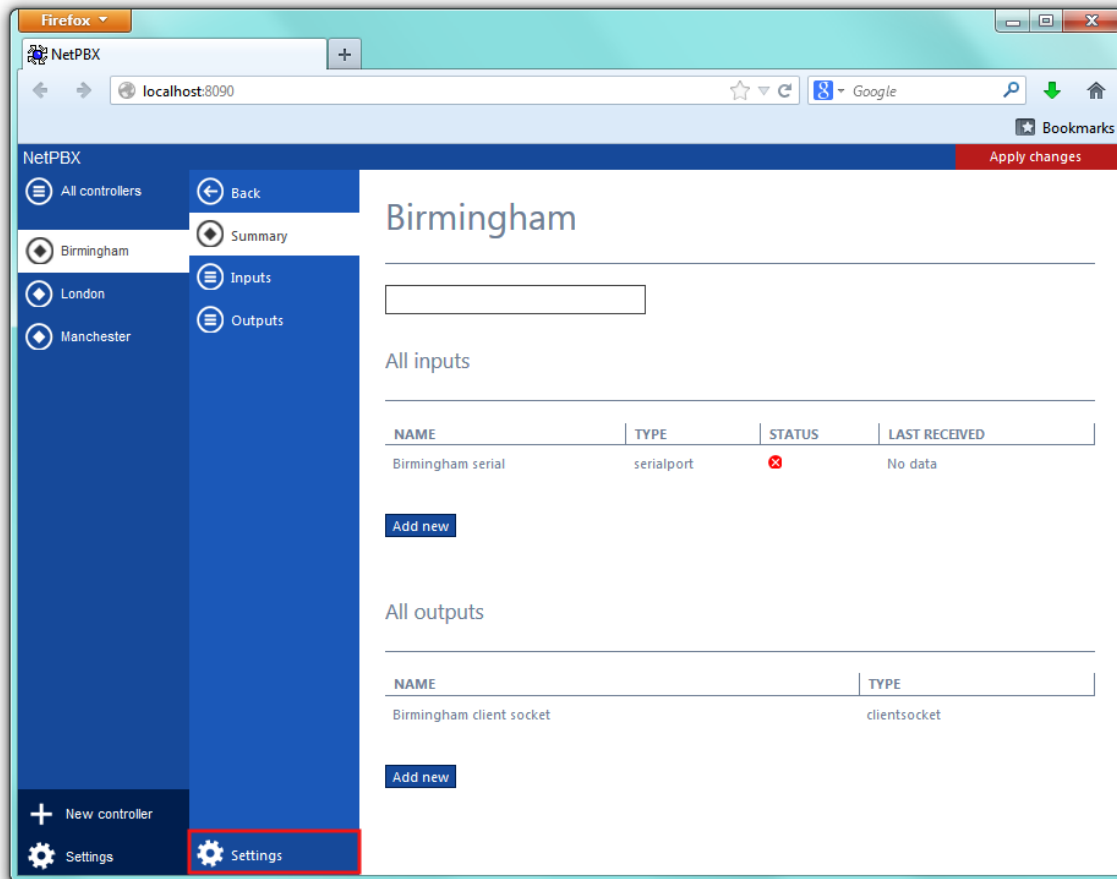
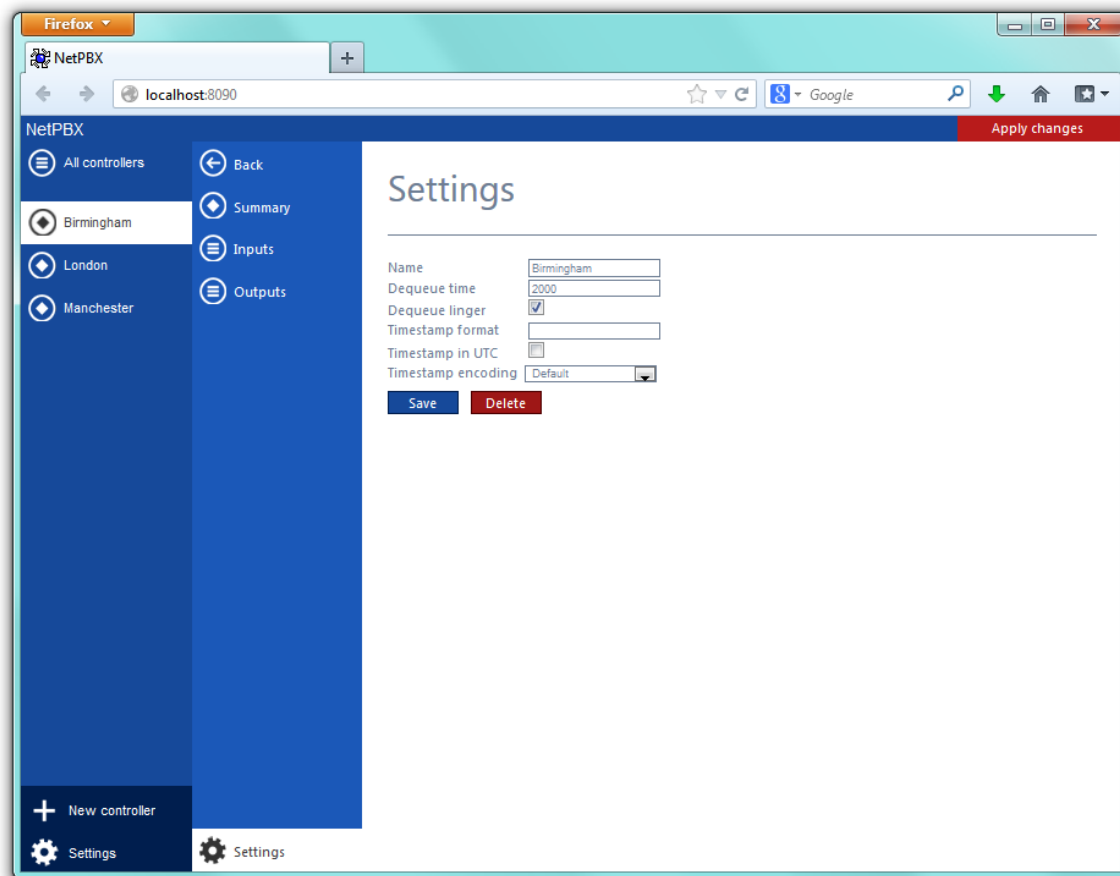


Settings

To configure the general properties of a controller, select it from the list of controllers and click on the **Settings** tab at the bottom-left corner of the screen, as shown below:



A new window will open, allowing you to edit the properties of the controller, as shown below:



Each field in this section is described in the table below:

Field	Description																
Name	The name of the controller																
Dequeue time	The frequency (in milliseconds) that the controller's dequeue timer checks the data buffer																
Dequeue linger	Determines whether or not the dequeue timer is reset whenever any input receives data																
Timestamp format	<p>Defines a string to place before every line of data when it is dequeued. The string can contain any or all of the following variables:</p> <table border="1"> <tr> <td>{year}</td><td>The current year, formatted as "yyyy"</td></tr> <tr> <td>{month}</td><td>The current month, formatted as "mm"</td></tr> <tr> <td>{day}</td><td>The current day, formatted as "dd"</td></tr> <tr> <td>{hour}</td><td>The current hour, formatted as "hh"</td></tr> <tr> <td>{minute}</td><td>The current minute, formatted as "mm"</td></tr> <tr> <td>{second}</td><td>The current second, formatted as "ss"</td></tr> <tr> <td>\r</td><td>Carriage return</td></tr> <tr> <td>\n</td><td>Line feed</td></tr> </table>	{year}	The current year, formatted as "yyyy"	{month}	The current month, formatted as "mm"	{day}	The current day, formatted as "dd"	{hour}	The current hour, formatted as "hh"	{minute}	The current minute, formatted as "mm"	{second}	The current second, formatted as "ss"	\r	Carriage return	\n	Line feed
{year}	The current year, formatted as "yyyy"																
{month}	The current month, formatted as "mm"																
{day}	The current day, formatted as "dd"																
{hour}	The current hour, formatted as "hh"																
{minute}	The current minute, formatted as "mm"																
{second}	The current second, formatted as "ss"																
\r	Carriage return																
\n	Line feed																
Timestamp in UTC	Indicates that the UTC time should be used as the time stamp, rather than the local time (default)																

**Timestamp
encoding**

Selects the type of encoding to use during conversion of byte array data to strings (and viceversa) when timestamping.

The following values are accepted:

<code>default</code>	Use the operating system default
<code>ascii</code>	Use plain (7-bit) ASCII
<code>unicode</code>	Use Unicode double-byte encoding
<code>utf8</code>	Use UTF8 versatile encoding