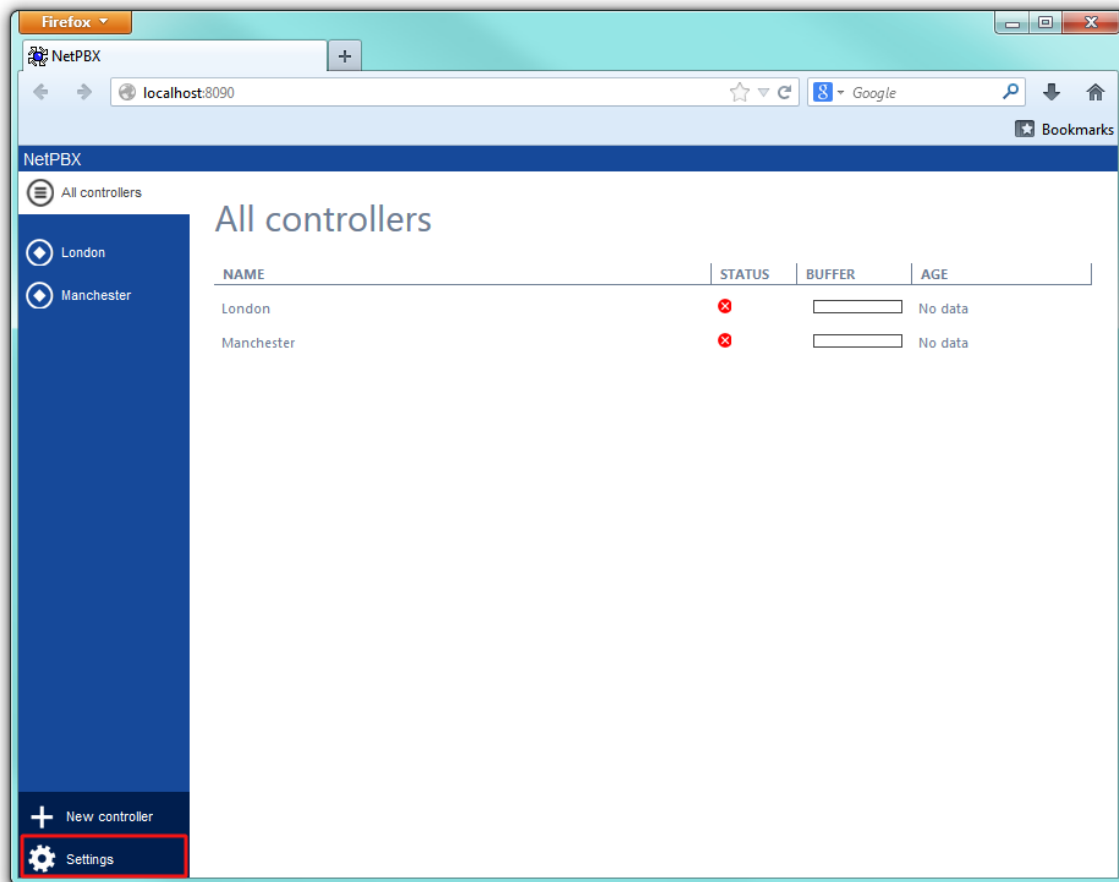
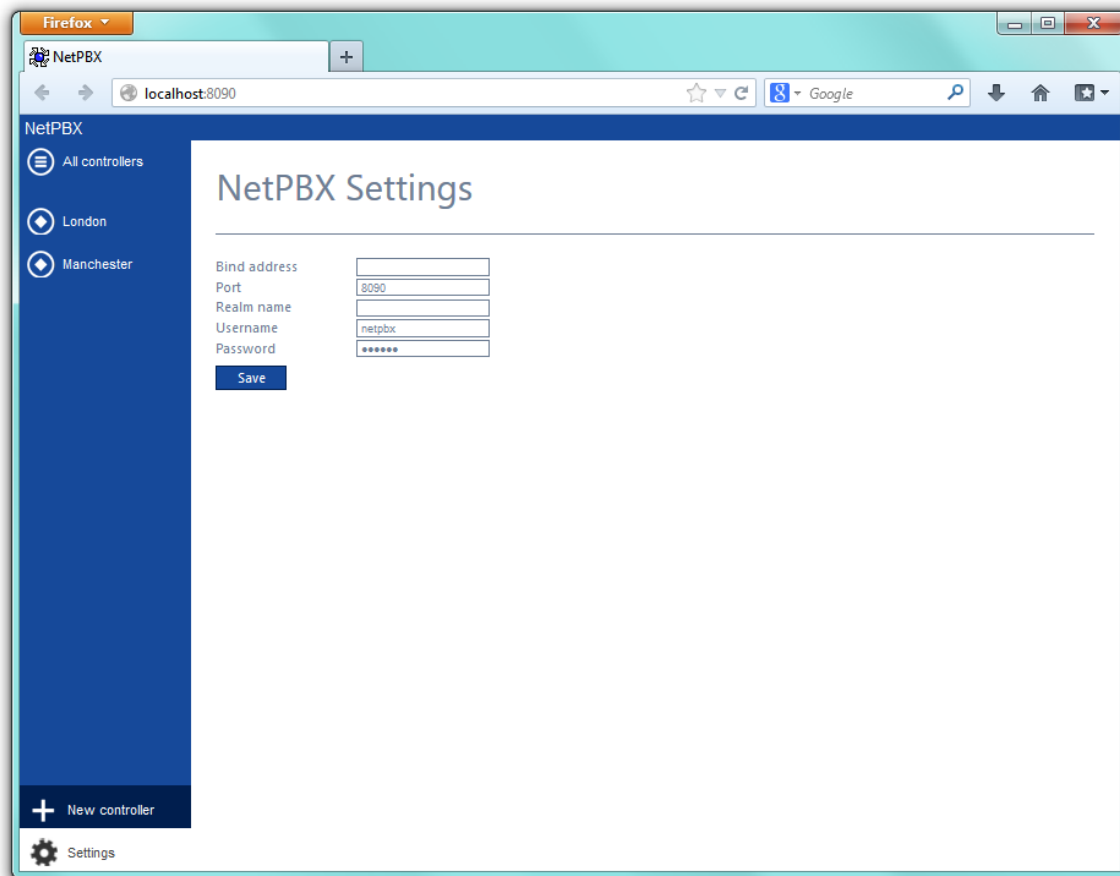


# NetPBX settings

To configure the general properties of NetPBX, click on the **Settings** button from the main NetPBX screen, as shown below:



The NetPBX settings window will open, where you can configure its properties, such as IP address, port number or login credentials, as shown below:



Field	Description
Bind	If the PC running NetPBX has more than one IP address, you can bind the web service to the IP address you want NetPBX to use.
Port	By default, NetPBX is running on port 8090. To change the port number, overtype the current entry.
Realm name	If your network uses realm names for routing and authentication, enter the realm name of the NetPBX service user account in the box provided.
Username	Enter a username that will used to login to NetPBX
Password	Enter a password that will be used to login to NetPBX